

D-SERIES CRAWLER EXCAVATORS
CX290D MATERIAL HANDLING /
SCRAP LOADING

CASE
CONSTRUCTION



IT'S TIME
FOR MORE

www.casece.com

EXPERTS FOR THE REAL WORLD
SINCE 1842

MAIN REASONS TO CHOOSE THE D-SERIES



HIGH RELIABILITY

- Reliability and durability with the new redesigned arm, boom and undercarriage.
- Optional hydrostatic reversible fan to match the real cooling demand, reducing power absorption and reducing maintenance needs thanks to the reversing mode



HIGH VERSATILITY

- A choice of booms and arms for both material handling and scrap loading applications provide superior reach and lifting capability.
- Material Handling version (MH): Purposely built and 5 m arm.
- Scrap Loading version (SL): reinforced straight boom and gooseneck arm.



HIGH EFFICIENCY

- Energy saving system to take advantage of all fuel saving opportunities.
- High levels of AdBlue autonomy with large AdBlue tank and low additive consumption.



TIER4 FINAL/STAGE IV ENGINE

- Selective Catalytic Reduction after-treatment system and Diesel Oxidation Catalyst.
- DPF-free solution saves time and maintenance costs, in addition to delivering a powerful and fuel efficient performance.



PRODUCTIVITY

- Faster cycles thanks to improved hydraulic system.
- Faster arm open speed provides an advantage when tossing scrap over.
- Commanding view of the working area from a height of 5 meters.
- Rigid elevating structure to work at the most productive.
- Superior reach and lifting capacity, makes short work of moving all sorts of waste, logs, garbage and scrap.



SAFE OPERATION

- New device prevents interference between the machine and its attachments through sensors on the bucket cylinder.
- Emergency cab lowering device operated hydraulically, further enhancing safety.
- Factory fitted travel alarm for greater safety on the jobsite around the machine.



COMFORTABLE CAB

- Superior cab structure with ample legroom for the operator.
- Fully adjustable workstation.
- Improvements to the pilot circuit reduce front attachment shock at full stroke.
- Less shaky cab, better comfort and greater safety around the machine.



BETTER VISIBILITY

- Standard rear and side camera for maximum visibility.
- New LED working light package, which is more than three times brighter than its halogen equivalent.

ENGINE

Model _____ ISUZU AQ-4HK1X
 Type _____ Water-cooled, 4-cycle diesel, 4-cylinder in line, High pressure common rail system (electric control), turbocharger with air cooled intercooler, SCR system.

Number of cylinders / Displacement (l) _____ 4 / 5.52
 Emissions level _____ Tier 4 final / Eu stage IV
 Bore & stroke (mm) _____ 115 x 125

Rated flywheel horse power

SAE J1349, ISO 9249 _____ 132.1 kW / 177 hp at 2000 min⁻¹
 ISO 14396 _____ 140 kW / 188 hp at 2000 min⁻¹

Maximum torque

SAE J 1349, ISO 9249 _____ 621 N-m at 1800 min⁻¹
 ISO 14396 _____ 642 N-m at 1800 min⁻¹

HYDRAULIC SYSTEM

Main pumps _____ 2 variable displacement axial piston pumps with regulating system
 Max. oil flow _____ 2 x 234 l/min at 2000 min⁻¹

Working circuit pressure

Boom/Arm/Bucket (MPa) _____ 34.3 - 37.3 with auto power boost
 Swing circuit (MPa) _____ 27
 Travel circuit (MPa) _____ 34.3

Pilot pump

_____ 1 gear pump
 Max. oil flow (l/min) _____ 20
 Working circuit pressure (MPa) _____ 3.9

Boom Cylinders

Bore (mm) _____ 140
 Stroke (mm) _____ 1126

Arm Cylinder (Dual cylinder)

Bore (mm) _____ 125
 Stroke (mm) _____ 1280

Bucket Cylinder (only CX290D Material Handling)

Bore (mm) _____ 120
 Stroke (mm) _____ 1010

SWING

Swing Motor _____ Fixed displacement axial piston motor
 Maximum swing speed (min⁻¹) _____ 6.5
 Swing torque (Nm) _____ 69800

FILTERS

Suction filter (µm) _____ 105
 Return filter (µm) _____ 6
 Pilot line filter (µm) _____ 8

ELECTRICAL SYSTEM

Voltage (V) _____ 24
 Alternator (Amp) _____ 50
 Starter (kW) _____ 24 V 5.0
 Battery _____ 2x12V 92 Ah/5 HR

UNDERCARRIAGE

Travel motor _____ Variable displacement axial piston motor
 High travel speed (Automatic travel speed shifting) (km/h) _____ 5.5
 Low travel speed (km/h) _____ 3.5
 Drawbar pull (KN) _____ 196
 Number of carrier rollers (each side) _____ 2
 Number of track rollers (each side) _____ 9
 Number of shoes (each side) _____ 51
 Type of shoes (MH/SL) _____ Triple grouser shoes / flat shoes
 Gradeability _____ 70 % (35°)

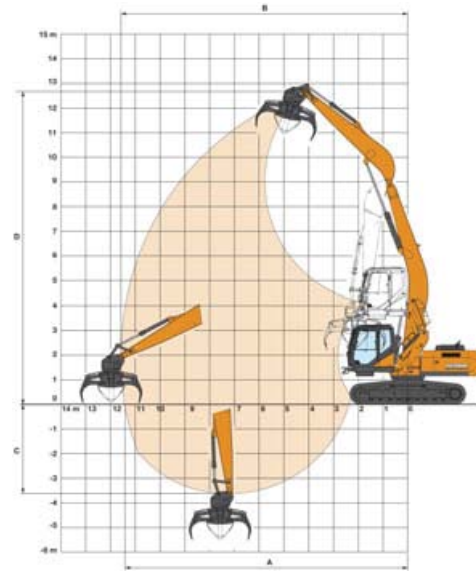
SOUND LEVEL

External guaranteed sound level
 (EU Directive 2000/14/EC) _____ LwA 102 dB(A)
 Operator cab sound pressure level (ISO 6396) _____ LpA 70 dB(A)

CIRCUIT AND COMPONENT CAPACITIES

Fuel tank (l) _____ 410
 Hydraulic system (l) _____ 250
 Hydraulic tank (l) _____ 147
 Adblue tank (l) _____ 120

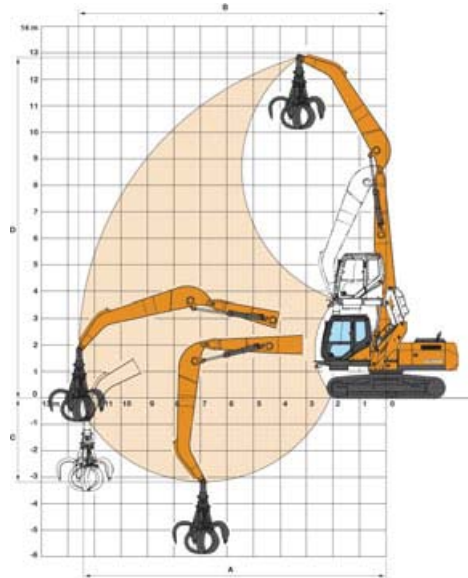
PERFORMANCE DATA CX290D MH



Arm 5.0 m

	mm	
Boom length	7100	
A Maximum reach at GRP	11410	
B Maximum reach	11580	
C Maximum depth	3610	
D Maximum digging height	12680	

PERFORMANCE DATA CX290D SL



Arm 5.80 m

	mm	
Boom length	7400	
A Maximum reach at GRP	12770	
B Maximum reach	12920	
C Maximum depth	3890	
D Maximum digging height	14420	

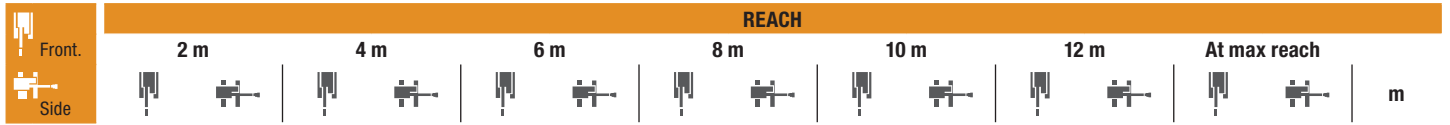
WEIGHT

With operator, lubricant, coolant and full fuel tank, 600 mm grouser shoes, front attachment

	Weight	
CX290D MH	32800 kg	Counterweight 8150 kg
CX290D SL	32600 kg	

TRANSPORT DIMENSIONS

		CX290D MH	CX290D SL
Overall length (with attachment)	mm	10230	10650
Overall height (to top of guardrail)	mm	3360	3360
Undercarriage overall width (with 600 mm shoes)	mm	3190	3190



CX290D MH - Standard arm 5.0 m length, 600 mm shoes.

12.0 m													5870*	5870*	5.63
10.0 m					7150*	7150*	5560*	5560*					4810*	4810*	8.27
8.0 m					7110*	7110*	6420*	6300					4450*	4380	9.85
6.0 m					7800*	7800*	6710*	6140	5990*	4240			4360*	3660	10.84
4.0 m	23890*	23890*	12680*	12680*	9080*	9080*	7290*	5850	5920	4110			4460*	3290	11.39
2.0 m			16350*	15120	10510*	8350	7930*	5510	5750	3940			4590	3120	11.58
0 m			7580*	7580*	11380*	7760	7720	5210	5590	3790			4610	3120	11.41
-2.0 m			7770*	7770*	11240*	7470	7530	5030	5500	3710			4910	3320	10.86

CX290D SL - Standard arm 5.8 m length, 600 mm shoes.

14.0 m			7510*	7510*									6640*	6640*	4.46
12.0 m					7590*	7590*	4730*	4730*					4600*	4600*	8.05
10.0 m							6380*	6380*	4190*	4190*			3960*	3960*	10.07
8.0 m					7080*	7080*	6350*	6350*	5820*	4500			3680*	3530	11.40
6.0 m					7770*	7770*	6690*	6320	5930*	4410	4510*	3210	3560*	3080	12.26
4.0 m			12290*	12290*	9010*	9010*	7280*	5990	6060	4240	4560	3150	3570*	2840	12.75
2.0 m			15910*	15300	10240*	8440	7920*	5600	5850	4040	4460	3060	3670*	2730	12.92
0 m			6400*	6400*	11320*	7770	7770	5260	5660	3860	4380	2980	3900*	2740	12.77
-2.0 m			6310*	6310*	11260*	7420	7540	5050	5540	3750			4450	3020	11.79

* The above loads (kg) are compliant to the ISO standards and refer to the excavator equipped without bucket. The indicated loads are no more than 87% of hydraulic system lift capacity or 75% of static tipping load. Values marked with an asterisk (*) are limited by the hydraulic lifting capacity.

**CNH INDUSTRIAL
 DEUTSCHLAND GMBH**
 CASE Baumaschinen
 Benzstr. 1-3 - D-74076 Heilbronn
 DEUTSCHLAND

CNH INDUSTRIAL FRANCE, S.A.
 16-18 Rue des Rochettes
 91150 Morigny-Champigny
 FRANCE

CNH INDUSTRIAL - UK
 First Floor, Barclay Court 2,
 Heavens Walk,
 Doncaster - DN4 5HZ
 UNITED KINGDOM

CNH INDUSTRIAL - SOUTH AFRICA
 Waterfall Business Park
 Bekker Street, Howick Close
 1685 Midrand - Johannesburg
 REPUBLIC OF SOUTH AFRICA

**CNH INDUSTRIAL
 MAQUINARIA SPAIN, S.A.**
 Avda. José Gárate, 11
 28823 Coslada (Madrid)
 ESPAÑA

CNH INDUSTRIAL ITALIA SPA
 Strada di Settimo, 323
 10099 San Mauro Torinese (TO)
 ITALIA

**CASE CUSTOMER CENTRE
 PARIS**
 RN 330 - Penchard
 77122 - Monthyon
 FRANCE

CNH INDUSTRIAL - MIDDLE EAST
 DAFZA - Dubai Airport Free Zone
 West Wing 4 B, Office 642
 P.O. Box 54588, Dubai,
 UNITED ARAB EMIRATES

NOTE: Standard and optional fittings can vary according to the demands and specific regulations of each country. The illustrations may include optional rather than standard fittings - consult your CASE dealer. Furthermore, CNH Industrial reserves the right to modify machine specifications without incurring any obligation relating to such changes.

Conforms to directive 2006/42/EC

CASE
00800-2273-7373

The call is free from a land line.
 Check in advance with your Mobile Operator if you will be charged. Toll free number not available from all calling areas.